

*Accelerate*  
Your Performance.



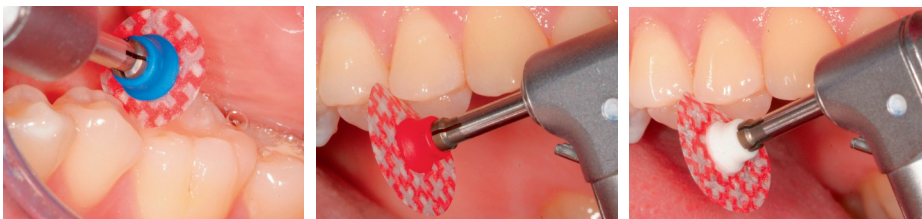
**SwissFlex**<sup>TM</sup>  
STRIPS & DISCS by **Alpen**<sup>®</sup>  
ROTARY INSTRUMENTS

## Accelerated Performance to the Finish

Metal-free center protects your restorations from damage

Mandrel "Snaps-In" to disc, alleviating slippage

Extra thin to allow control, and ease in polishing



### Testimonial

"With SwissFlex Discs, restoration surfaces can be finished conveniently and efficiently. The centre of the disc is made of plastic. Unlike other competitive brands with a metallic centre, the disc covers the mandrel to prevent damage to the adjacent tooth while finishing."

Dr. M. Besek, Swiss Dental Centre, Zürich, Switzerland

**coltène**   
**whaledent**<sup>®</sup>

# SwissFlex™ STRIPS & DISCS

by **Alpen**®  
ROTARY INSTRUMENTS



Cat. No.	RP250095KT	RP250094KT
Indication	Intro Kit	4 mm Strip Kit
Description	Discs and Strips	Assortment Pack
Content	Mix / 282 pcs	Mix / 80 pcs



Cat. No.	RP232018RA	RP232019RA	RP232020RA	RP232021RA	RP232022RA	RP232023RA	RP232024RA	RP232025RA	RP232026RA
Indication		contouring		finishing		polishing		high luster	
Description	mandrel	super coarse (70 µm)		coarse (50µm)		medium (30µm)		fine (5µm)	
Disc Diameter		1/2"	3/8"	1/2"	3/8"	1/2"	3/8"	1/2"	3/8"



Cat. No.	RP232015ST		RP232016ST		RP232017ST	
Indication	contouring	finishing	contouring	finishing	polishing	high luster
Description	super coarse (70µm)	coarse (50µm)	super coarse (70µm)	coarse (50µm)	medium (30µm)	fine (5µm)
Length in mm	175		175		175	
Width	2		3.5		3.5	

## Order Now!

**Step 1** – After each product number and description below, write in the quantity you would like to order.

**Step 2** – Place order by calling **800 221 3046** or faxing order form to **330 916 7077**, or contacting your authorized **Coltène/Whaledent** dealer.

Shape #	Description	Quantity

Name \_\_\_\_\_

Address \_\_\_\_\_


Phone \_\_\_\_\_

Email \_\_\_\_\_

Dealer \_\_\_\_\_

**Coltène/Whaledent Inc.**   
235 Ascot Parkway  
Cuyahoga Falls, OH 44223 / USA  
Tel. USA & Canada + 1 800 221 3046  
+ 1 330 916 8800  
Fax +1 330 916 7077  
info@coltnewwhaledent.com

**Coltène/Whaledent AG**  
Feldwiesenstrasse 20  
9450 Altstätten / Switzerland  
Tel. +41 (0)71 757 53 00  
Fax +41 (0)71 757 53 01  
info@coltnewwhaledent.ch

**Coltène/Whaledent GmbH + Co. KG**   
Raiffeissenstrasse 30  
89129 Langenau / Germany  
Tel. +49 (0)7345 805 0  
Fax +49 (0)7345 805 201  
info@coltnewwhaledent.de

**coltène**   
**whaledent**®

P/N 30494A